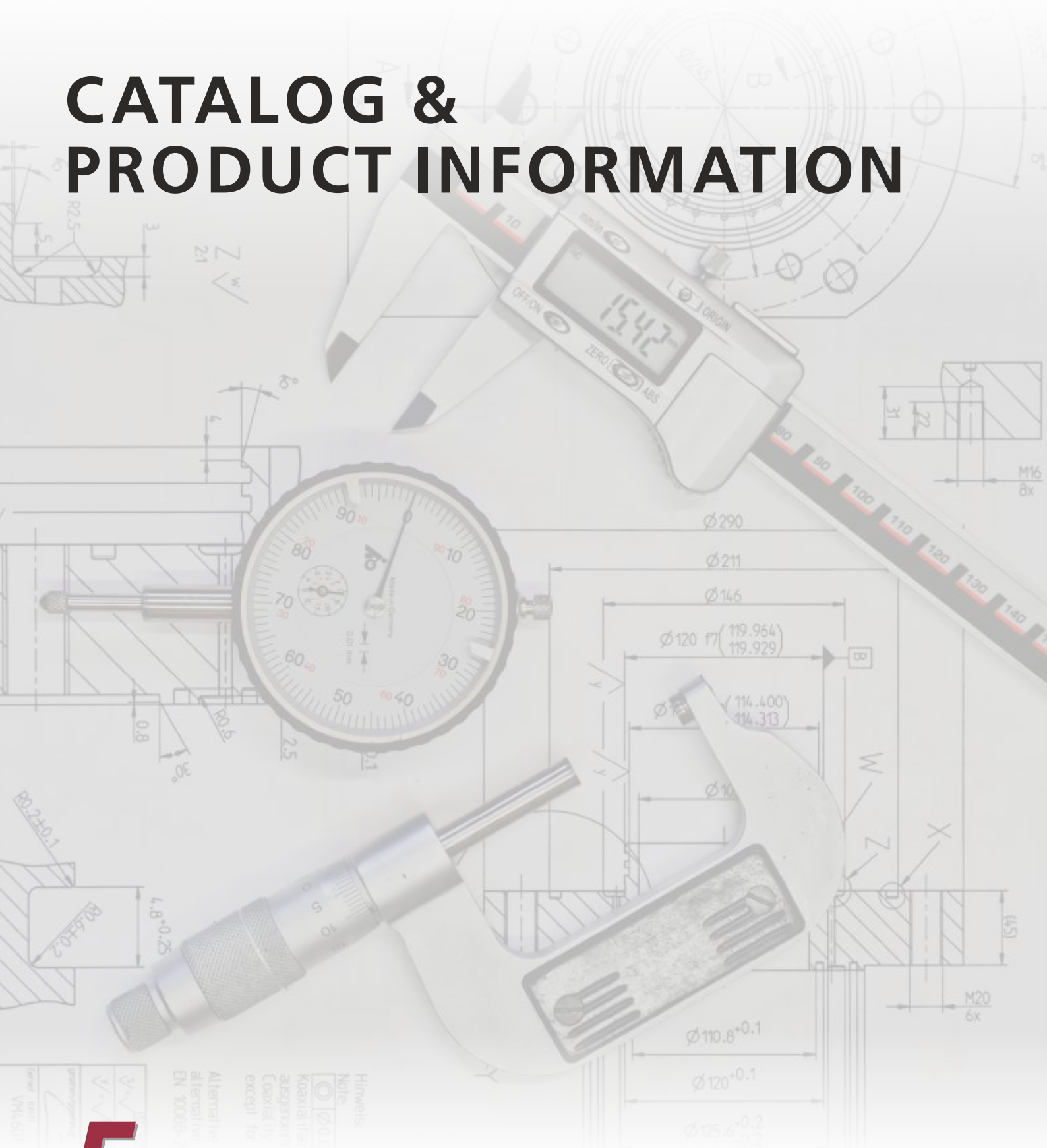


Special Tools

CATALOG & PRODUCT INFORMATION



Special Tools

Your specialist in the field of custom tool manufacturing

We design and manufacture bespoke tools tailored to your specific needs. Our product portfolio includes assembly aids and measuring tools, among others.

We develop and manufacture solutions for:

- The automotive industry
- Mechanical and plant engineering
- Industry and commerce
- Pharmaceutical and medical technology

Our services and capabilities include:

- In-house design and engineering
- In-house tool manufacturing
- Customization and assembly
- Prototypes, one-off items and small production runs
- Marking and labeling

The manufacturing of our products involves CNC-based milling, turning, laser cutting and sawing, among other processes.

Based on a specified technical drawing or a sample, we produce the product in our own production facilities. This is followed by a quality inspection, ensuring a smooth and efficient order fulfillment process.

Below you will find a selection of products from our catalog. We would be pleased to hear from you regarding your order.











Phone: +49 441 936100 or
info@otremba-industriebedarf.de

MADE IN GERMANY

Special Tools

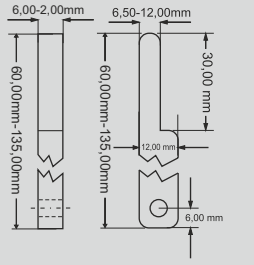
Table of Contents

4	Feeler Gauges	
6	Adapter Blocks	
7	Gap Gauges	
9	Positioning Gauge	
9	Star-Shaped Gauge	
10	Measuring Tools	
11	Assembly Tools	
13	General Terms and Conditions	

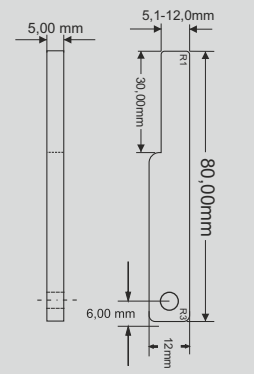
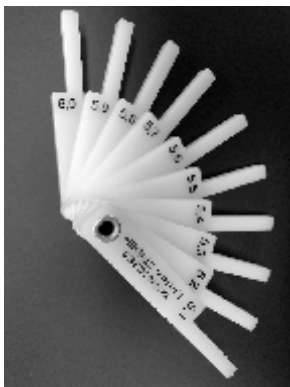
Feeler Gauges



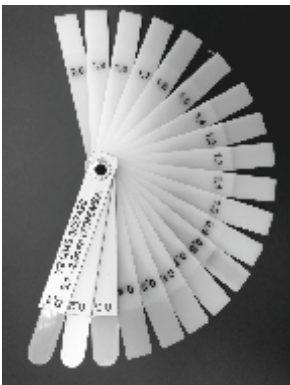
POM gap gauges, foldable with tubular rivet connection.
Surface-protective, highly wear-resistant, with engraved blade thickness for easy reading.
Ideal for checking gaps and joint dimensions without damaging surfaces or paint.



Feeler Gauge Set	Order Number
60mm long, measuring range 6,5 x 6 - 12 x 2mm	40001
80mm long, measuring range 6,5 x 6 - 12 x 2mm	40002
135mm long, measuring range 6,5 x 6 - 12 x 2mm	40003



Feeler Gauge Set	Order Number
80mm long, measuring range 5,1 - 6 mm	40004
80mm long, measuring range 6,1 - 7 mm	40005
80mm long, measuring range 7,1 - 8 mm	40006
80mm long, measuring range 8,1 - 9 mm	40007
80mm long, measuring range 9,1 - 10 mm	40008
80mm long, measuring range 10,1 - 11 mm	40009
80mm long, measuring range 11,1 - 12 mm	40010



Feeler Gauge Set	Order Number
80mm long, measuring range 0,1 - 5,0 mm *4er Set* (0,1 - 0,3 with technical foil)	40011
80mm long, measuring range 0,1 - 2,0 mm (0,1 - 0,3 with technical foil)	40012
80mm long, measuring range 2,1 - 3,0 mm	40013
80mm long, measuring range 3,1 - 4,0 mm	40014
80mm long, measuring range 4,1 - 5 mm	40015

Feeler Gauge Set according to Specification	Order Number
Individual gauges customized and assembled to your requirements.	40016

Feeler Gauges



Accessories and Spare Parts

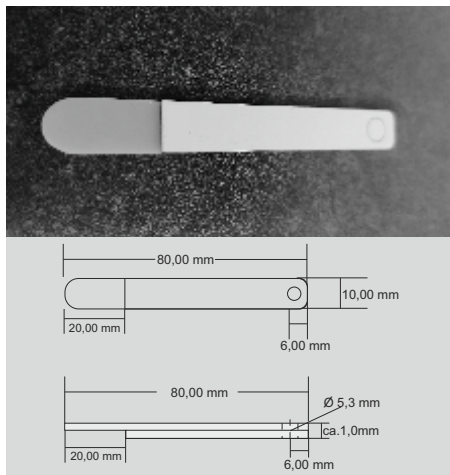


Accessories for Feeler Gauge Sets

Order Number

Plastic Pocket Protectors in various Sizes

40017



Spare Parts for Feeler Gauge Sets

Order Number

80 mm long, measuring range 0,1 mm (*with technical foil*)

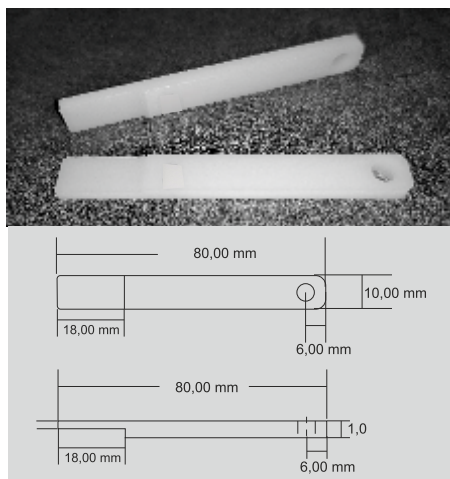
40018

80 mm long, measuring range 0,2 mm (*with technical foil*)

40019

80 mm long, measuring range 0,3 mm (*with technical foil*)

40020



Spare Parts for Feeler Gauge Sets

Order Number

80 mm long, measuring range 0,4 mm

40021

80 mm long, measuring range 0,5 mm

40022

80 mm long, measuring range 0,6 mm

40023

80 mm long, measuring range 0,7 mm

40024

80 mm long, measuring range 0,8 mm

40025

80 mm long, measuring range 0,9 mm

40026

80 mm long, measuring range 1,0 mm

40027

80 mm long, measuring range 1,1 mm

40028

80 mm long, measuring range 1,2 mm

40029

80 mm long, measuring range 1,3 mm

40030

80 mm long, measuring range 1,4 mm

40031

80 mm long, measuring range 1,5 mm

40032

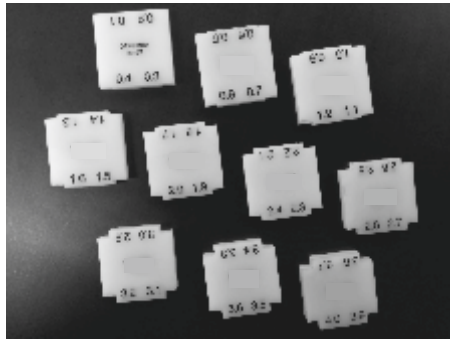
80 mm long, measuring range 1,6 mm

40033

Adapter Blocks



For measuring actual and nominal clearances or for use as spacers in small-component assemblies.
Made from high-quality plastic. Custom sizes available on request.

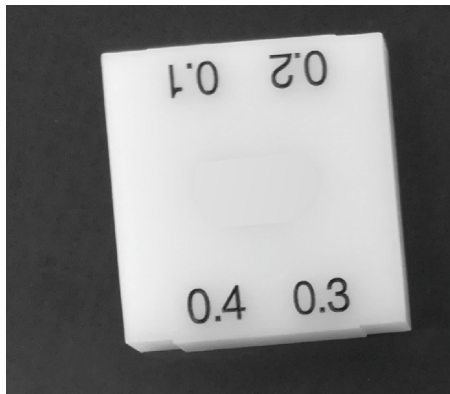
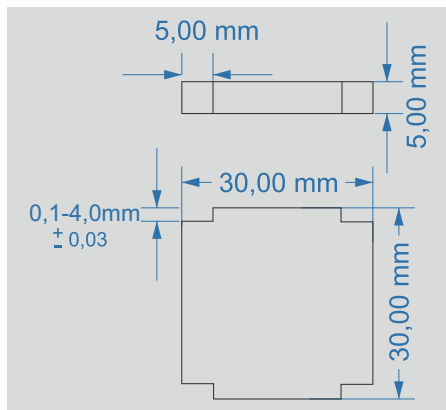


Adapter Blocks

Order Number

30x30x5mm, measuring range 0,1 - 4,0 mm,
Graduations in 0,1 mm increments
1 set (one set consists of 10 individual gauges)

40034



Adapter Blocks - Single Gauge

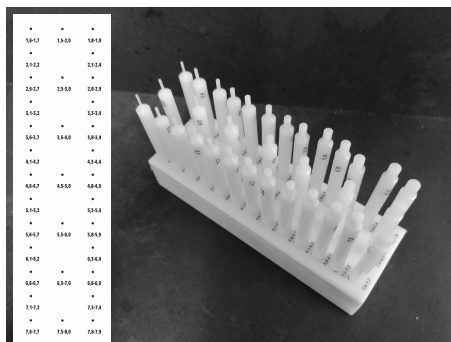
Order Number

30x30x5mm, measuring range 0,1 - 0,4 mm	40035
30x30x5mm, measuring range 0,5 - 0,8 mm	40036
30x30x5mm, measuring range 0,9 - 1,2 mm	40037
30x30x5mm, measuring range 1,3 - 1,6 mm	40038
30x30x5mm, measuring range 1,7 - 2,0 mm	40039
30x30x5mm, measuring range 2,1 - 2,4 mm	40040
30x30x5mm, measuring range 2,5 - 2,8 mm	40041
30x30x5mm, measuring range 2,9 - 3,2 mm	40042
30x30x5mm, measuring range 3,3 - 3,6 mm	40043
30x30x5mm, measuring range 3,7 - 4,0 mm	40044

Gap Gauges



The conical gap gauges are used for checking and measuring gaps.
Designed for use on sensitive materials such as painted surfaces.
Custom sizes available on request.

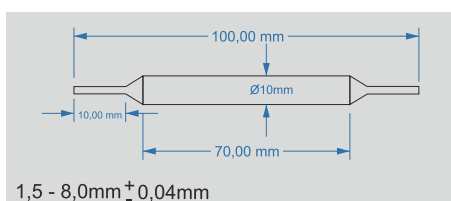


Gap Gauges in Cube Form

Order Number

measuring range 1,5 - 8,0 mm,
Graduations in 0,1 mm increments
1 set (one set consists of 33 individual gauges)

40045



Gap Gauge

Order Number

measuring range 1,5 / 2,0 mm

40046

measuring range 1,6 / 1,7 mm

40047

measuring range 1,8 / 1,9 mm

40048

measuring range 2,1 / 2,2 mm

40049

measuring range 2,3 / 2,4 mm

40050

measuring range 2,5 / 3,0 mm

40051

measuring range 2,6 / 2,7 mm

40052

measuring range 2,8 / 2,9 mm

40053

measuring range 3,1 / 3,2 mm

40054

measuring range 3,3 / 3,4 mm

40055

measuring range 3,5 / 4,0 mm

40056

measuring range 3,6 / 3,7 mm

40057

measuring range 3,8 / 3,9 mm

40058

measuring range 4,1 / 4,2 mm

40059

measuring range 4,3 / 4,4 mm

40060

measuring range 4,5 / 5,0 mm

40061

measuring range 4,6 / 4,7 mm

40062

measuring range 4,8 / 4,9 mm

40063

measuring range / 5,2 mm

40064

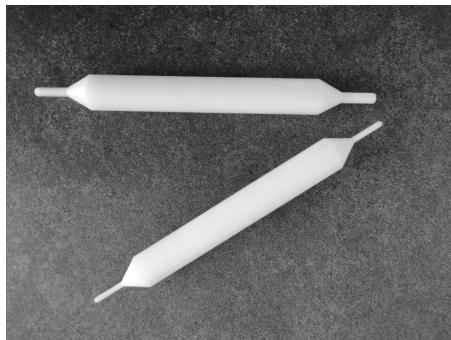
measuring range 5,3 / 5,4 mm

40065

Gap Gauges



The conical gap gauges are used for checking and measuring gaps.
Designed for use on sensitive materials such as painted surfaces.
Custom sizes available on request.

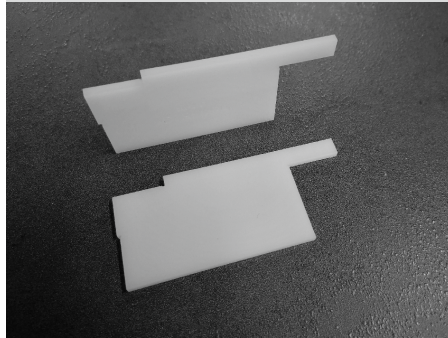
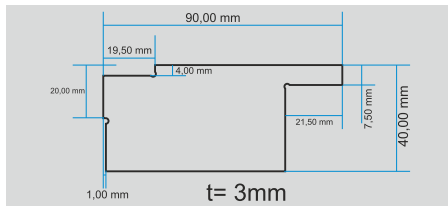


Gap Gauge	Order Number
measuring range 5,5 / 6,0 mm	40066
measuring range 5,6 / 5,7 mm	40067
measuring range 5,8 / 5,9 mm	40068
measuring range 6,1 / 6,2 mm	40069
measuring range 6,3 / 6,4 mm	40070
measuring range 6,5 / 7,0 mm	40071
measuring range 6,6 / 6,7 mm	40072
measuring range 6,8 / 6,9 mm	40073
measuring range 7,1 / 7,2 mm	40074
measuring range 7,3 / 7,4 mm	40075
measuring range 7,5 / 8,0 mm	40076
measuring range 7,6 / 7,7 mm	40077
measuring range 7,8 / 7,9 mm	40078
measuring range as specified, graduations in 0,1 mm increments	40079

Positioning Gauge



Practical assembly aid for precise positioning, with various control dimensions.
Custom sizes available on request.

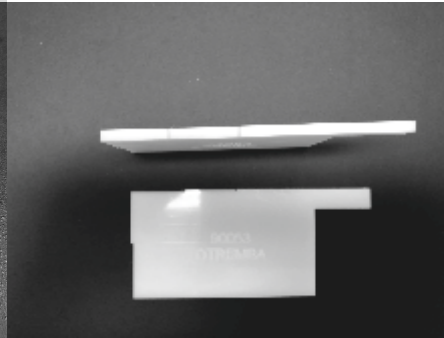


Positioning Gauge

manufactured to customer specifications

Order Number

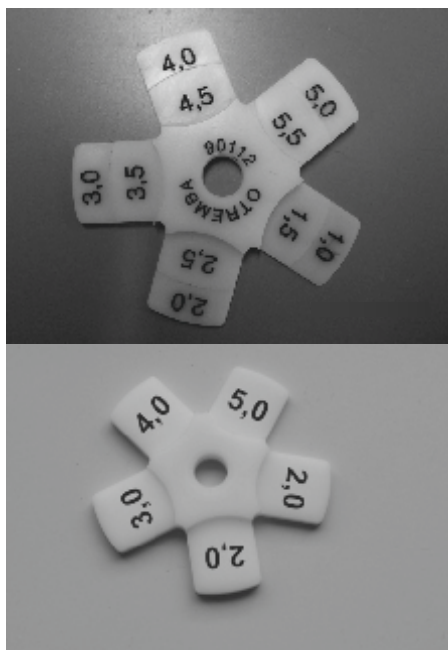
40080



Star-Shaped Gauge



For checking gap dimensions. Measuring pins can be used individually or in combination.
Number of measuring pins, with or without graduated measuring surfaces, is adapted to your application.
Material: POM (Polyoxymethylene)



Star-Shaped Gauge

manufactured to customer specifications

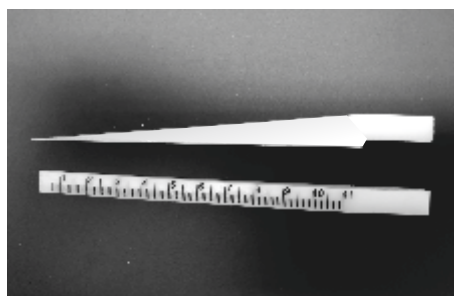
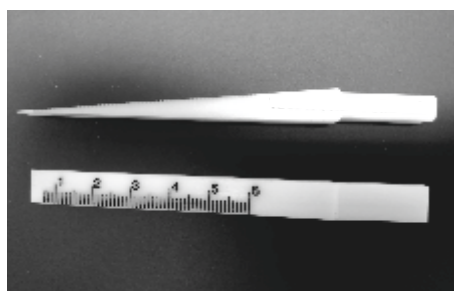
Order Number

40081

Measuring Tools



For measuring surface irregularities, gaps, joints, or drilled holes.
Custom-made versions with special dimensions are available.



Measuring Wedge

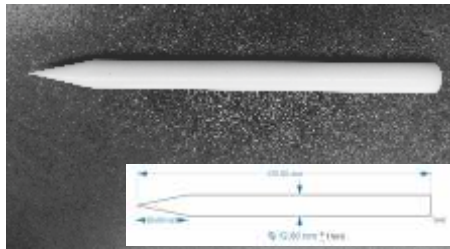
Order Number

95 mm long, measuring range 0,5 - 9,0 mm	40082
102 mm long, measuring range 0,5 - 6,0 mm	40083
manufactured to customer specifications	40084

Assembly Tools



Assembly tools made to customer specifications

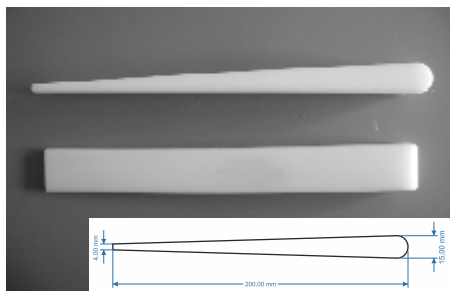


Assembly Wedge

170 mm long, diameter 12 mm

Order Number

40085



Assembly Wedge

200 mm long, rounded

Order Number

40086



Assembly Wedge

wedge-shaped tip

Order Number

40087



Driving Tool

280 mm long and 41 mm high,
with 6 mm felt

Order Number

40088



Assembly Rod

170 mm long and 22 mm high - curved with notch

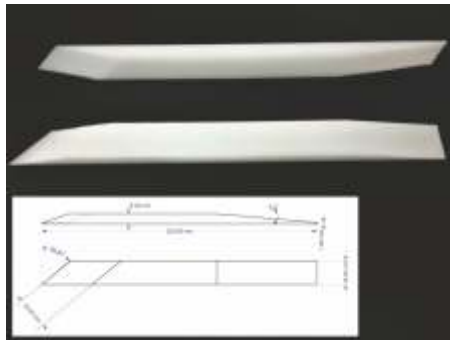
Order Number

40089

Assembly Tools



Assembly tools made to customer specifications

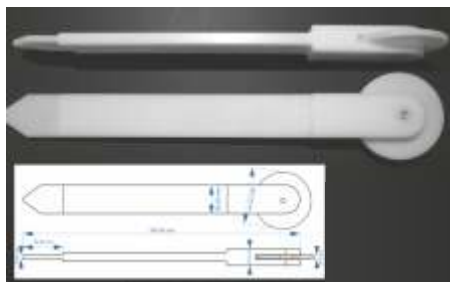


Assembly Rod

220 mm long and 19 mm wide - chamfered on both sides

Order Number

40090



Rolling Tool

Assembly Rod with Integrated Roller
350 mm long, roller: 72 mm in diameter and 5 mm wide

Order Number

40091

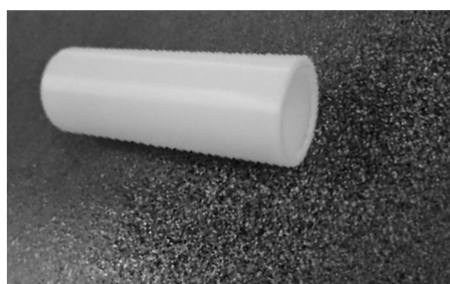


Perforated Rolling Tool

Assembly Rod with Integrated, perforated Roller
335 mm long, roller: 78 mm in diameter and 3,6 mm wide

Order Number

40092



Cap for Impact Wrench Socket

80 mm high
Wall thickness 0,8 mm
Rim at top 3,75 mm
Diameter: outer 28,20 mm and inner 26,80 mm

Order Number

40093

Terms and Conditions of Sale, Delivery and Payment

1. Acceptance of the Terms and Conditions of Delivery

The following terms and conditions of delivery and payment shall apply to all business transactions with the purchaser. These terms and conditions shall remain valid for all future business relationships with the purchaser, even if they are not expressly agreed again in writing. Any deviating terms and conditions that we do not expressly acknowledge in writing shall not be binding on us.

2. Offers and Conclusion of Contract

2.1 Our offers and prices are always subject to change and non-binding, unless expressly stated otherwise. Orders shall be deemed accepted only upon our written confirmation. The same shall apply to sales concluded by representatives. Any additions, amendments, oral ancillary agreements or assurances made by employees shall require our written confirmation in order to be valid. We kindly request that orders be submitted in writing. We accept no liability for errors or mistakes occurring during transmission by the purchaser.

2.2 Design work, drawings, and structural calculations shall generally be carried out only after an order has been placed. If such work is prepared at the customer's request already at the quotation stage and no order is subsequently placed, the associated costs shall be charged.

3. Pricing

The prices valid on the day of delivery shall apply, plus statutory value-added tax (VAT). Unless otherwise stated, we shall be bound by the prices stated in our quotations for a period of 30 days from the date thereof. Should a material change in certain cost factors occur thereafter, in particular costs for wages, materials, or freight, the agreed price may be adjusted to an appropriate extent in line with the impact of the relevant cost factors. For orders with a net value of less than 25,00 EUR, we reserve the right to charge a small-quantity surcharge.

Packaging and postage costs shall be borne by the purchaser and will be charged at cost.

4. Tolerances

We reserve the right to make minor, customary industry deviations with regard to all dimensions, colour shades, weights and illustrations specified by us. Over- or under-deliveries within customary industry limits of up to 10% of the ordered quantity shall not constitute grounds for complaint.

5. Ownership, Copyright

All production equipment used by us in the manufacture of the contractual product, in particular drawings, films, models, templates, designs and tools, shall remain our property, even if charged separately, and shall not be delivered. Any reproduction, imitation, or disclosure to third parties of drawings, samples, or templates created by us is permitted only with our express consent. In the case of manufacture based on samples, drawings, or specifications provided by the purchaser, the purchaser shall be liable for any infringement of third-party intellectual property rights as well as for any violation of laws of which we could not reasonably be aware.

6. Shipping, Freight, Transfer of Risk

Unless the purchaser has provided specific instructions, shipment shall be effected at our discretion by rail, post, freight forwarder or our own vehicles. We reserve the right to select appropriate packaging materials. The costs for express delivery shall be borne by the recipient. The risk of loss or damage shall pass to the purchaser once the goods have been handed over to the person or company carrying out the transport or have left the factory for the purpose of dispatch. If shipment becomes impossible through no fault of our own, the risk shall pass to the purchaser upon notification of readiness for dispatch. The goods shall be insured against transport risks at the purchaser's expense.

7. Delivery Times

7.1 The delivery times valid at the time the order is placed may be agreed as binding or non-binding. Any agreement on delivery times must be made in writing.

7.2 The delivery period shall be extended by a reasonable amount, even in the event of delay, if unforeseeable circumstances occur, such as force majeure, operational disruptions, machine breakdowns or delays in the delivery of essential raw materials. It is irrelevant whether such events occur at our premises or at those of one of our subcontractors. If delivery or performance becomes impossible due to one of the circumstances listed above, we shall be released from our delivery obligations. In such case, the purchaser shall be entitled to withdraw from the contract after expiry of a reasonable grace period set by the purchaser.

7.3 We shall be entitled to make partial deliveries within the agreed or extended delivery period. The purchaser's right of withdrawal shall not extend to deliveries already made.

8. Warranty

If the delivered goods are defective or lack warranted characteristics, we shall, at our discretion and to the exclusion of any further warranty claims by the purchaser, remedy the defect or provide a replacement. Any defects in the delivery must be reported to us in writing without delay, at the latest within 10 days of receipt of the goods. We shall be liable for replacement deliveries or remedial work to the same extent as for the original delivered item. The warranty for replacement deliveries shall be granted to the same extent as for the original item. We shall not be liable for defects arising from documents, drawings, or samples submitted by the purchaser. Complaints or disputes of any kind shall not suspend the obligation to make payment. If part of the goods is defective, the purchaser shall generally not be entitled to reject the entire shipment. Returns of goods require our prior consent.

9. Terms of Payment

9.1 Unless otherwise agreed in writing, our deliveries and services are payable within 8 days from the invoice date with a 2% cash discount or within 20 days net without deduction. Contract processing work is payable immediately without any discount. In the event of late payment, the purchaser shall bear bank interest and charges in full.

9.2 Cheques and bills of exchange shall be deemed payment only upon full clearance.

10. Retention of Title

The goods delivered by us shall remain our property until the purchaser has settled all claims arising from the business relationship with us in full. Payment shall be deemed to have been made upon receipt of the corresponding amount by us. All claims arising from the resale of goods subject to retention of title, including ancillary and security rights, are hereby assigned to us by the business partner. As long as our business partner meets its payment obligations to us in due time, it shall be entitled to collect the assigned receivables itself. The business partner shall not be entitled to make security assignments or pledges. If the realization of our claims appears to be at risk, the business partner shall, upon request, notify its customers of the assignment and provide us with all necessary information and documentation.

11. Place of Performance and Jurisdiction

Oldenburg shall be agreed as the place of performance and jurisdiction. All contractual relationships shall be governed by the laws of the Federal Republic of Germany.

12. Binding Nature of Our Terms and Conditions

Should individual provisions of these terms and conditions be invalid for any reason whatsoever, the validity of the remaining provisions shall remain unaffected.